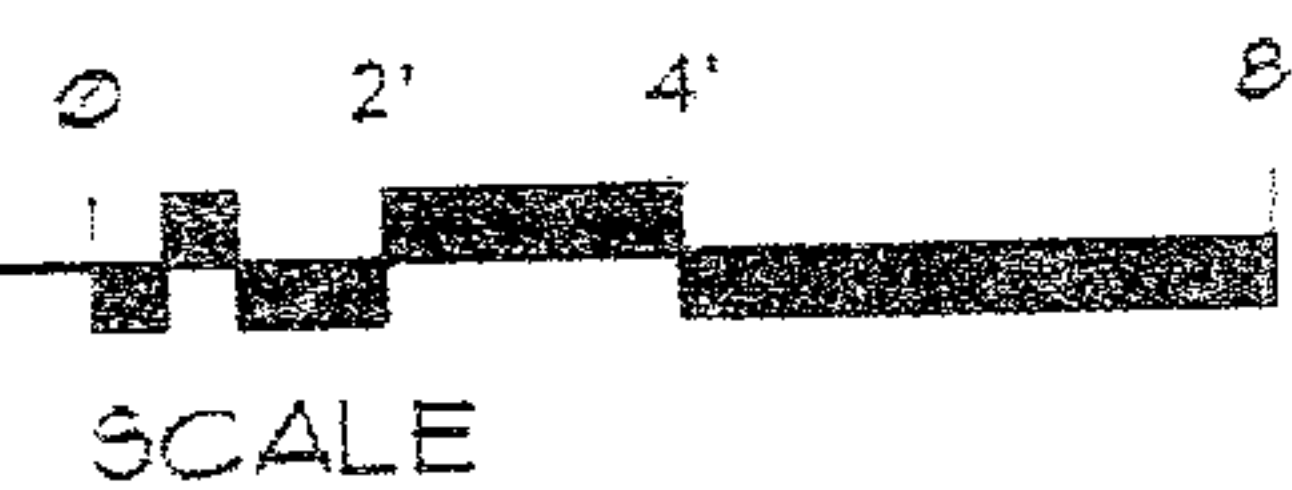




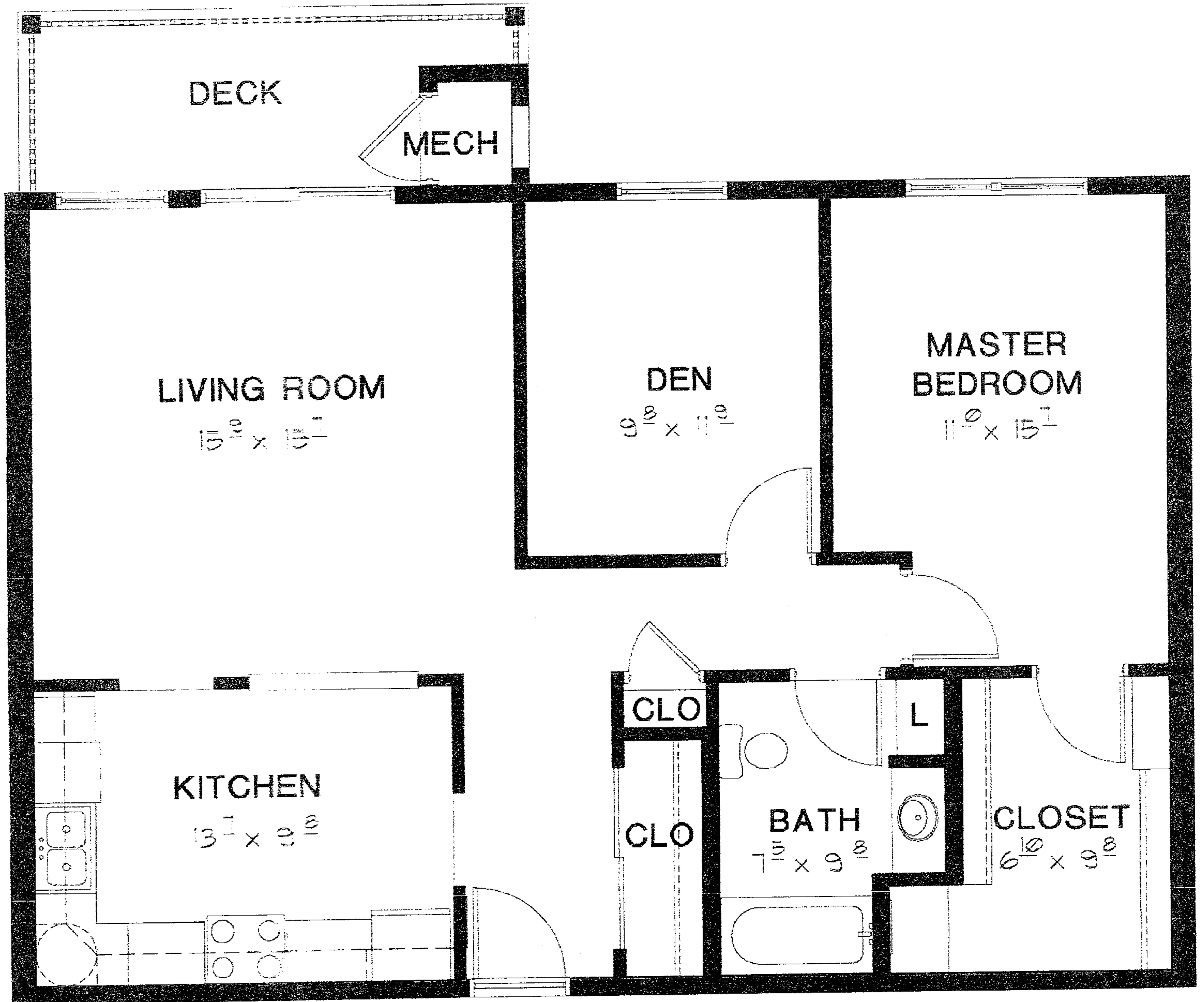
Spruce

TOTAL UNIT AREA = 952 SQFT

DECK AREA = 94 SQFT



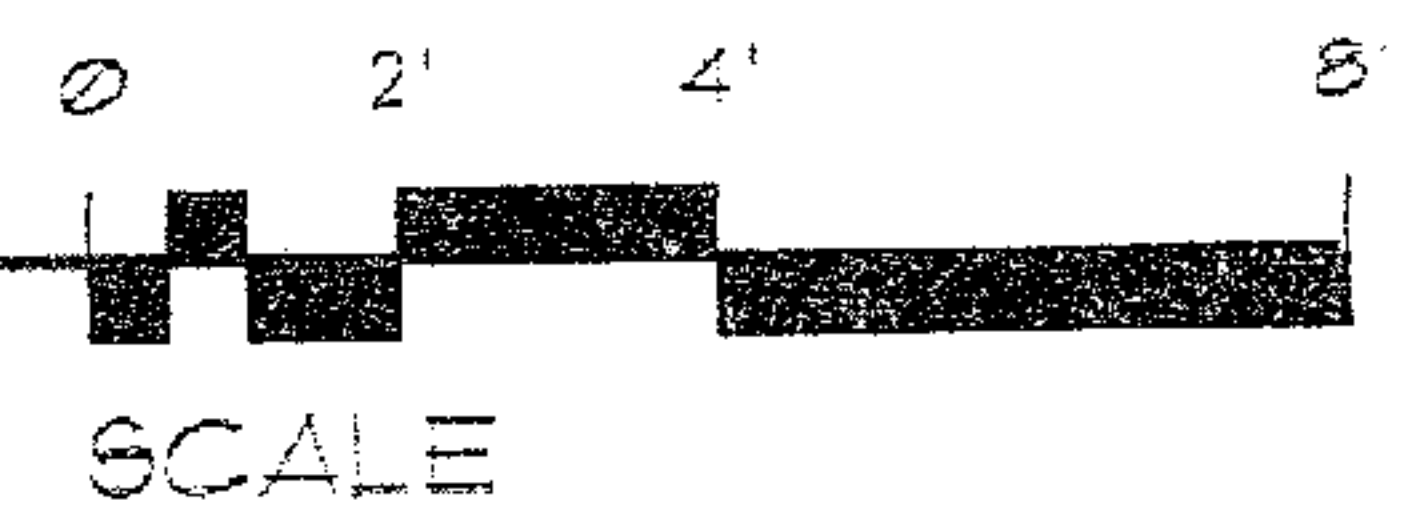
Drawings are approximate & are subject to change



Birch

TOTAL UNIT AREA = 965 SQFT

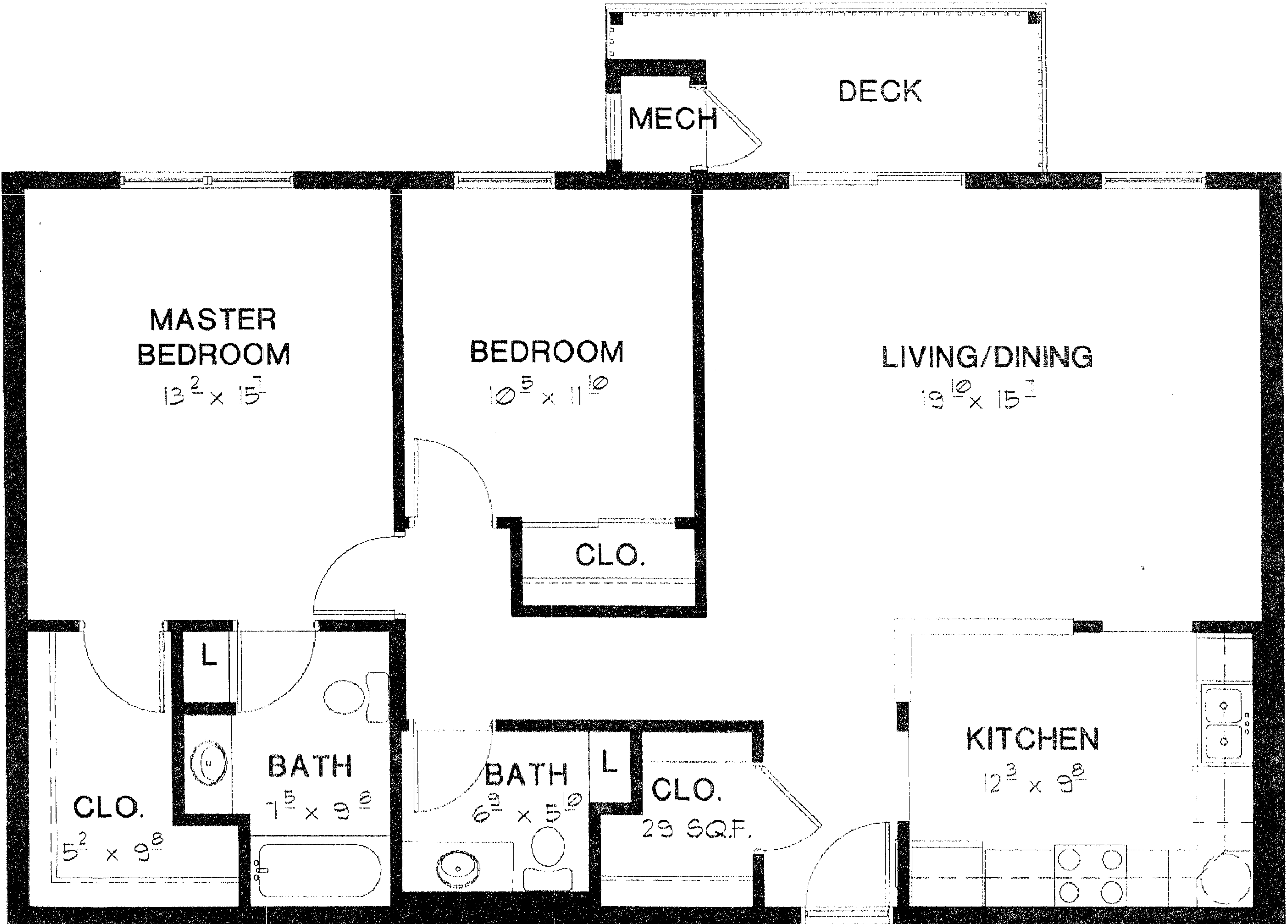
DECK AREA = 85 SQFT



V. 3, June 3, 2001; Sizes are approximate.

Drawings are approximate & are subject to change

V. 3, June 3, 2001; Sizes are approximate.



Drawings are approximate & are subject to change

Maple

TOTAL UNIT AREA =1138 SQFT

DECK AREA =80 SQFT



V. 3, June 3, 2001; Sizes are approximate.

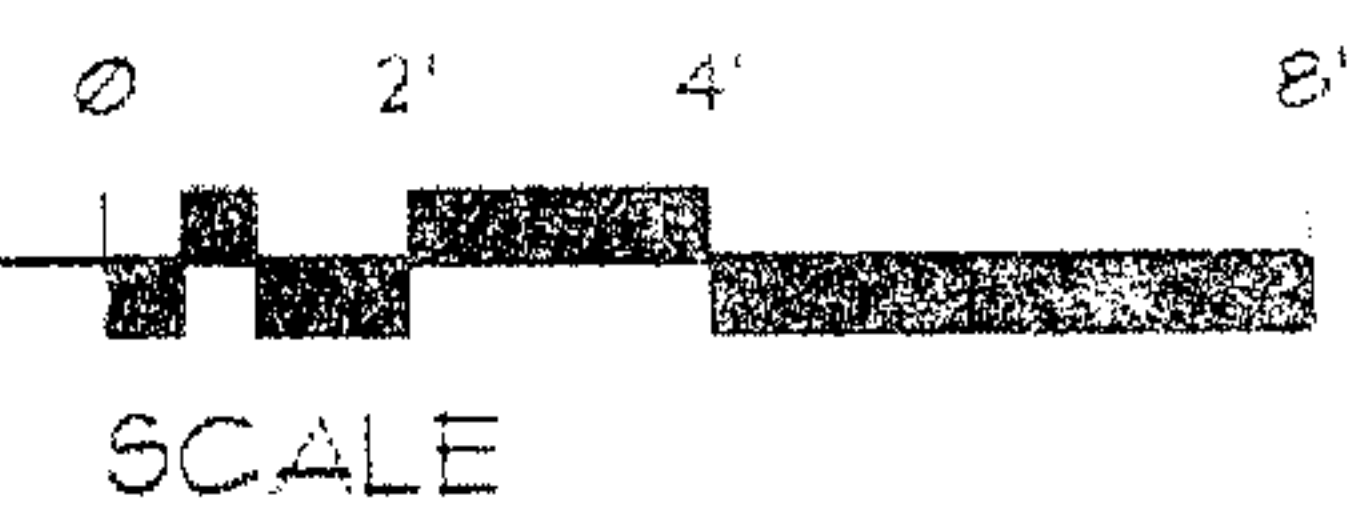


Drawings are approximate & are subject to change

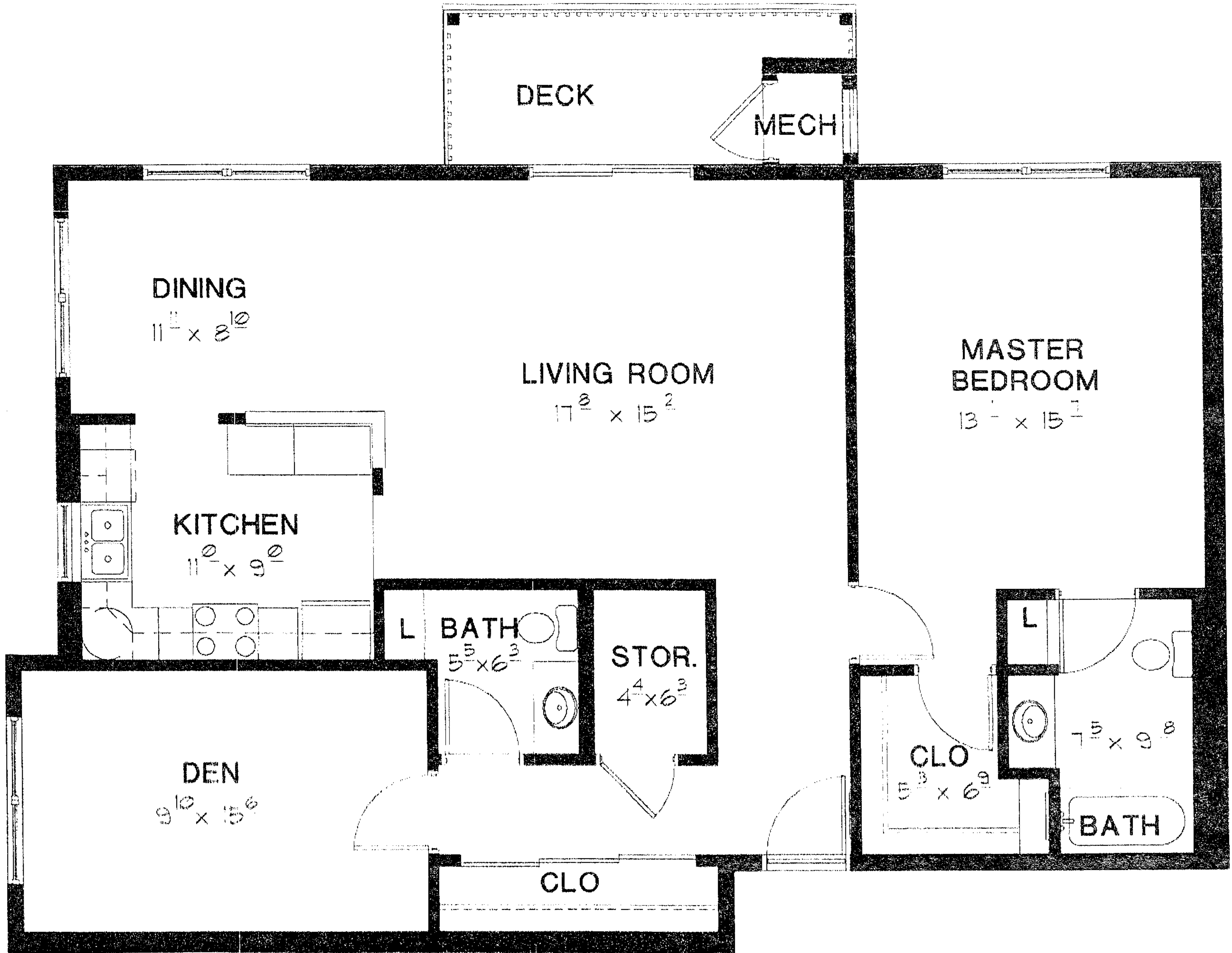
Hickory

TOTAL UNIT AREA =1141 SQFT

DECK AREA =80 SQFT



V. 3, June 3, 2001; Sizes are approximate.

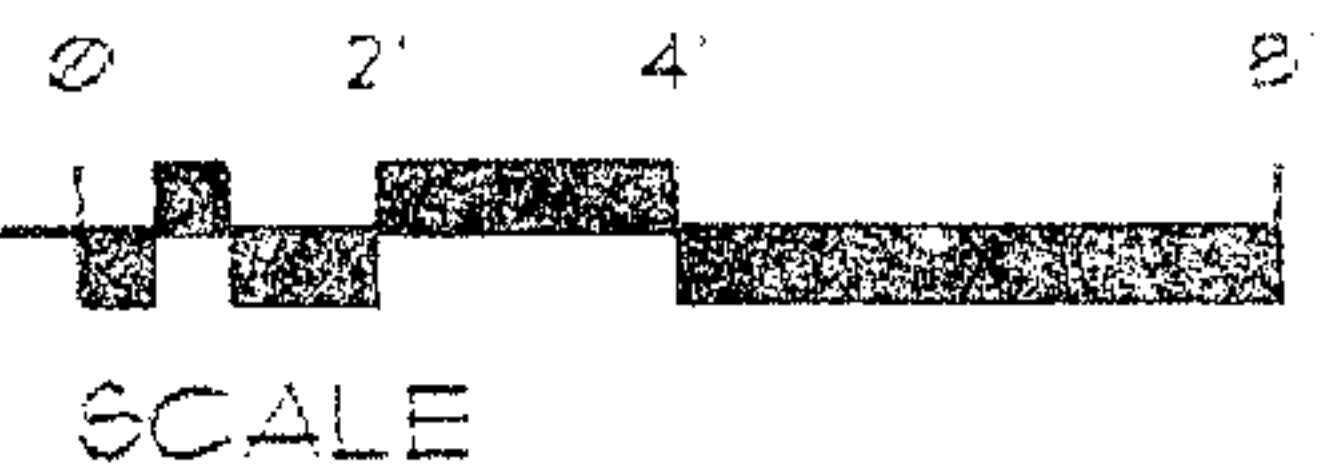


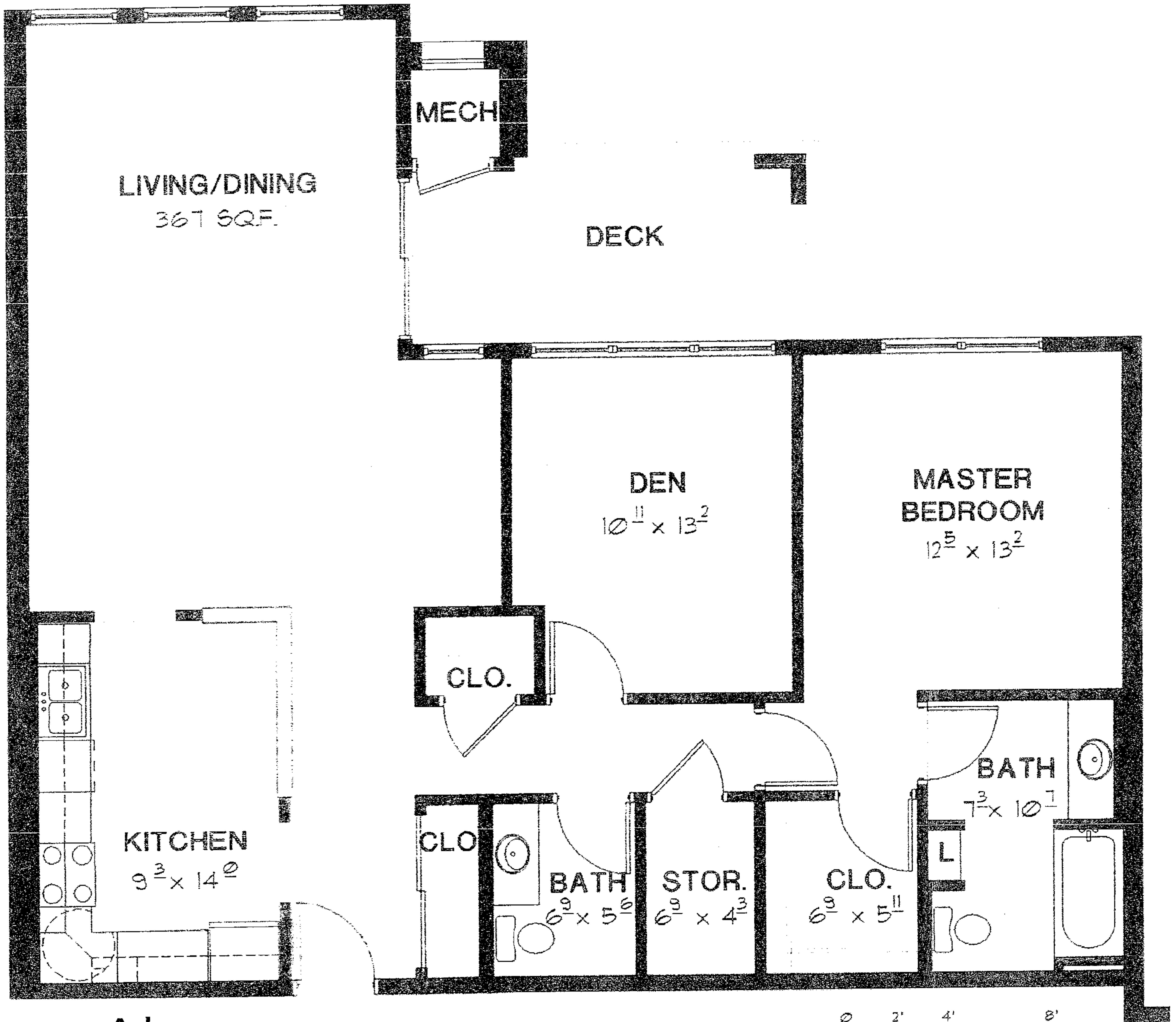
Drawings are approximate & are subject to change

Hawthorne

TOTAL UNIT AREA = 1197 SQFT

DECK AREA = 80 SQFT

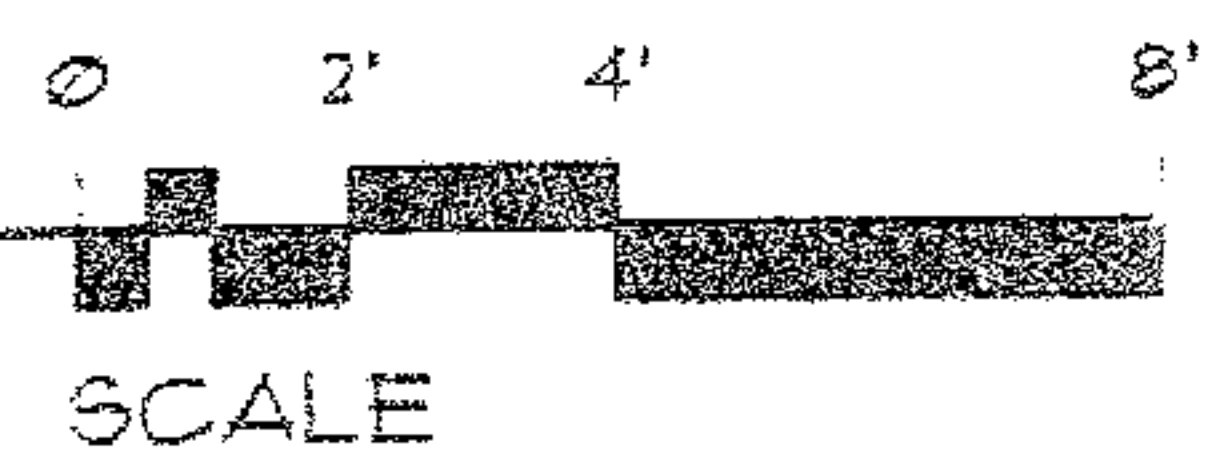


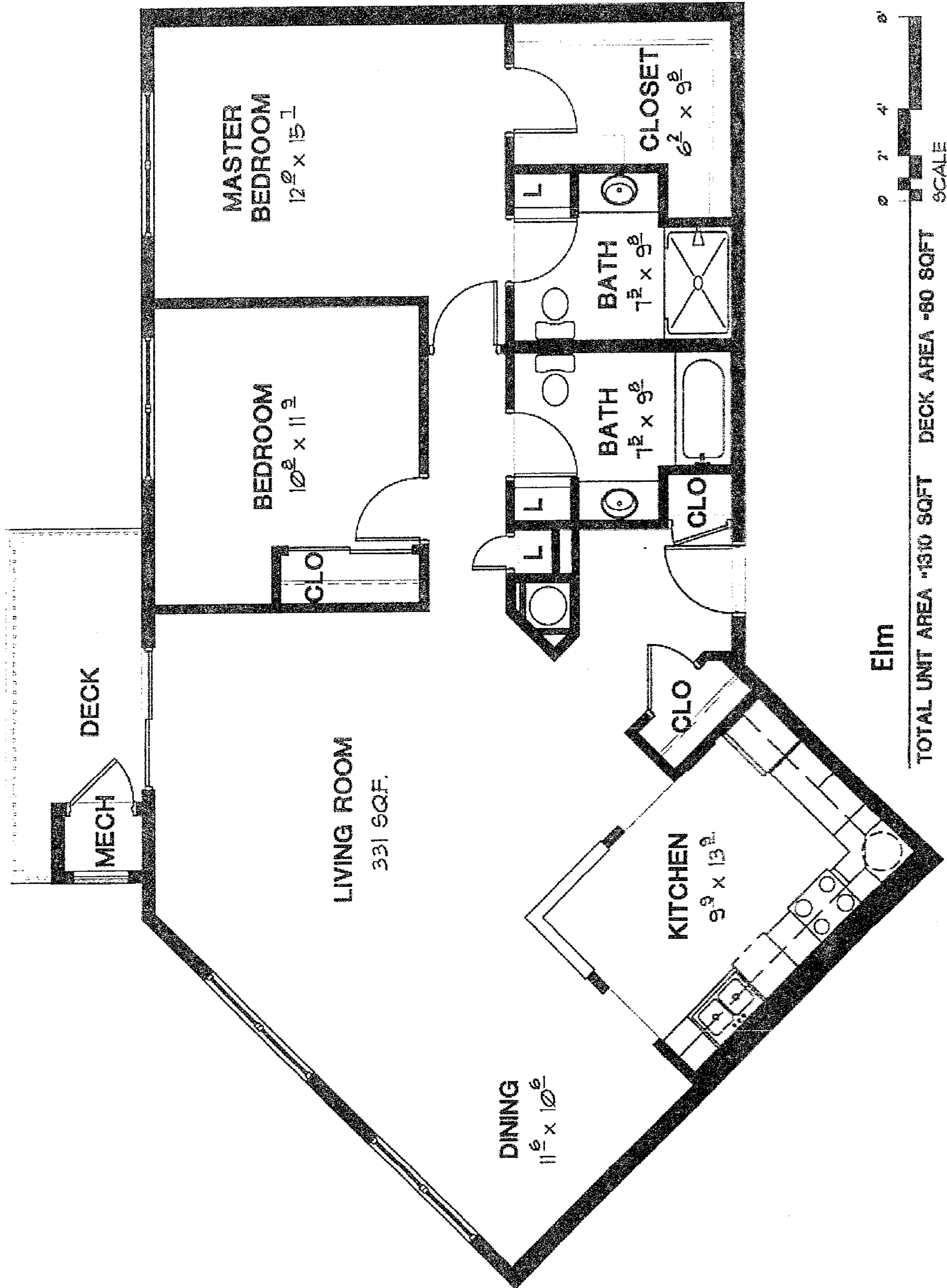


Ash

TOTAL UNIT AREA -1222 SQFT

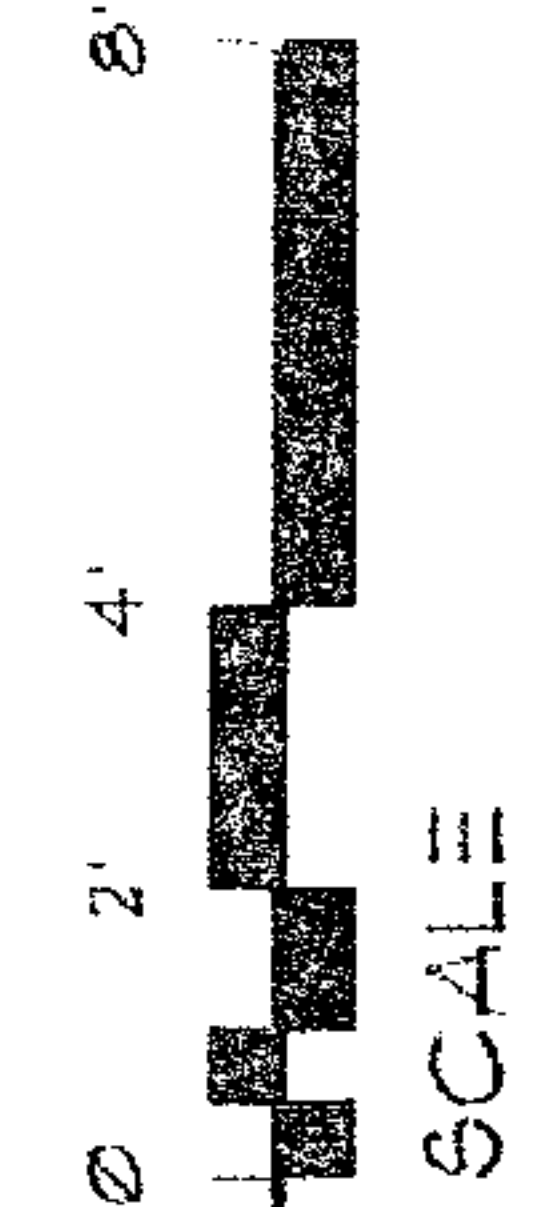
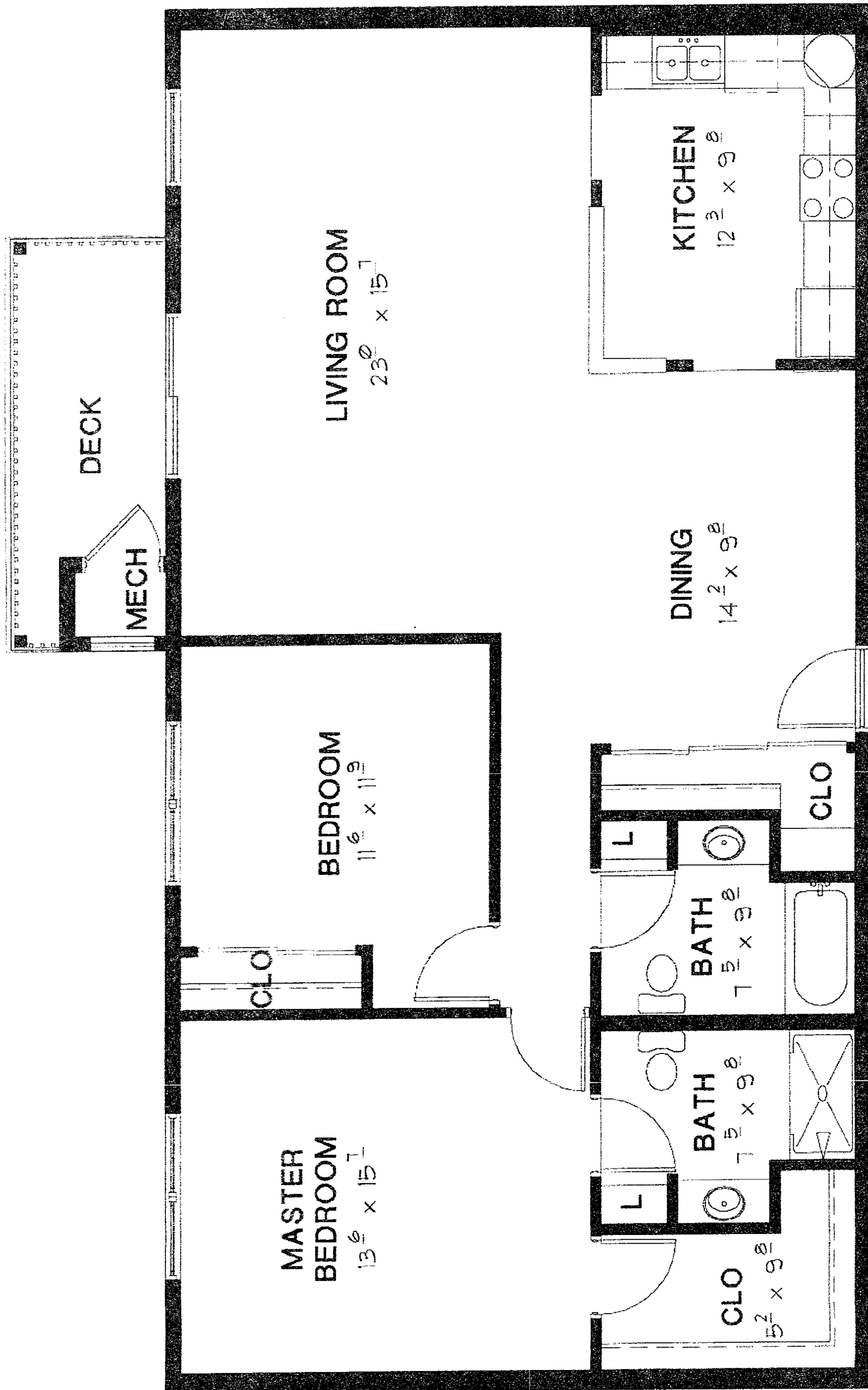
DECK AREA-108 SQFT





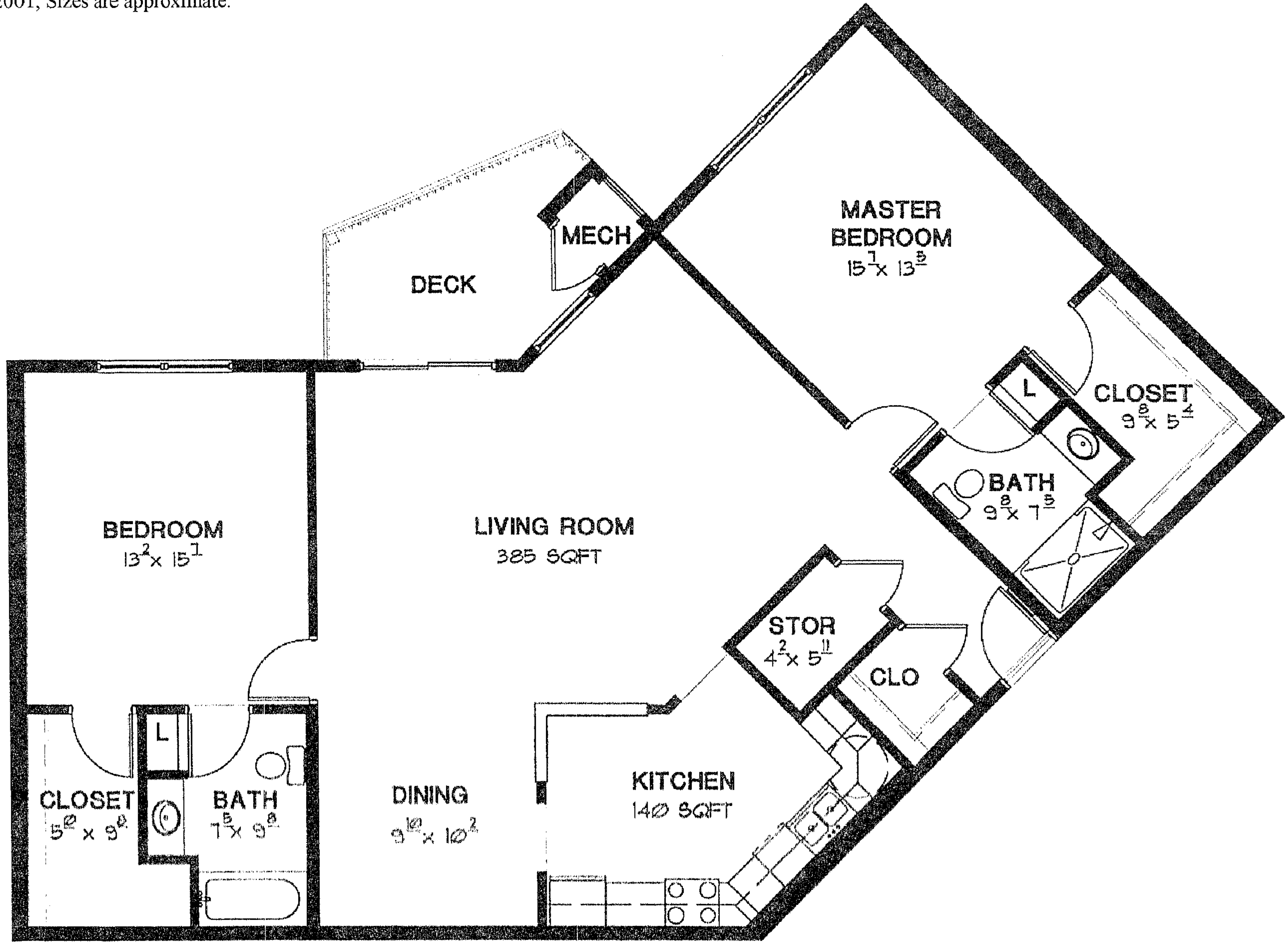
V. 3, June 3, 2001; Sizes are approximate.

Drawings are approximate & are subject to change



Willow
TOTAL UNIT AREA -1321 SQFT DECK AREA -80 SQFT

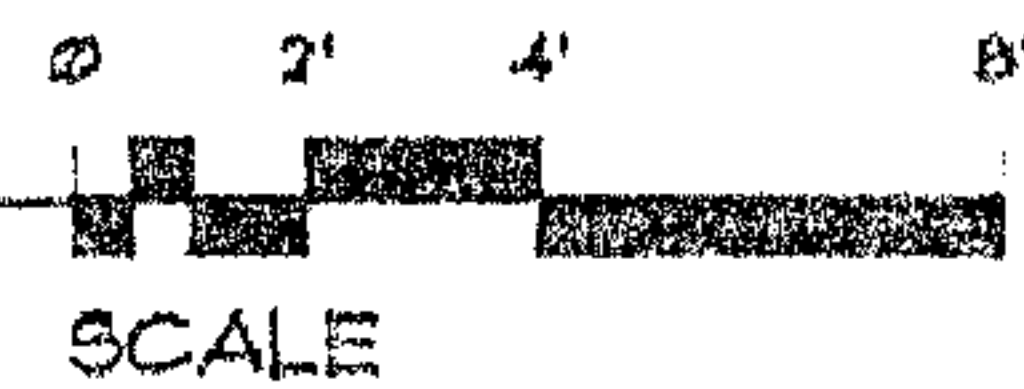
3, June 3, 2001; Sizes are approximate.



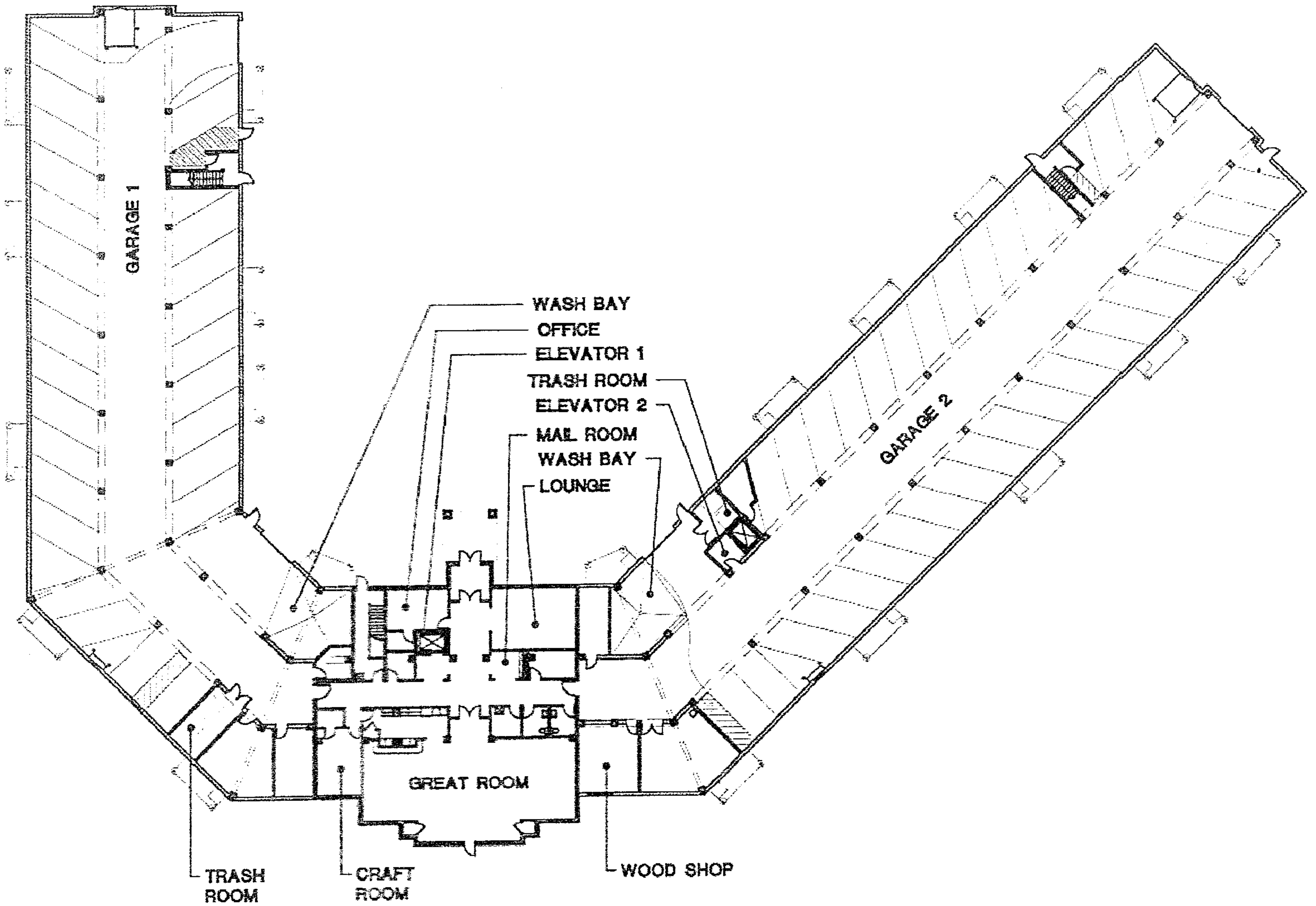
Oak

TOTAL UNIT AREA - 1453 SQFT

DECK AREA - 94 SQFT

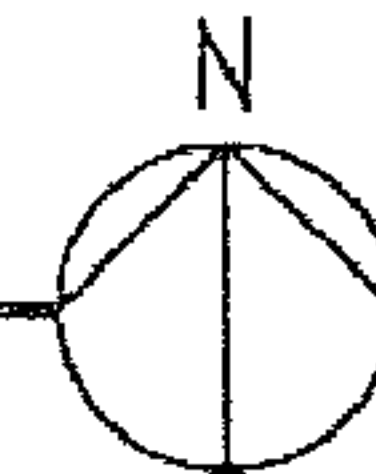


Drawings are approximate & are subject to change



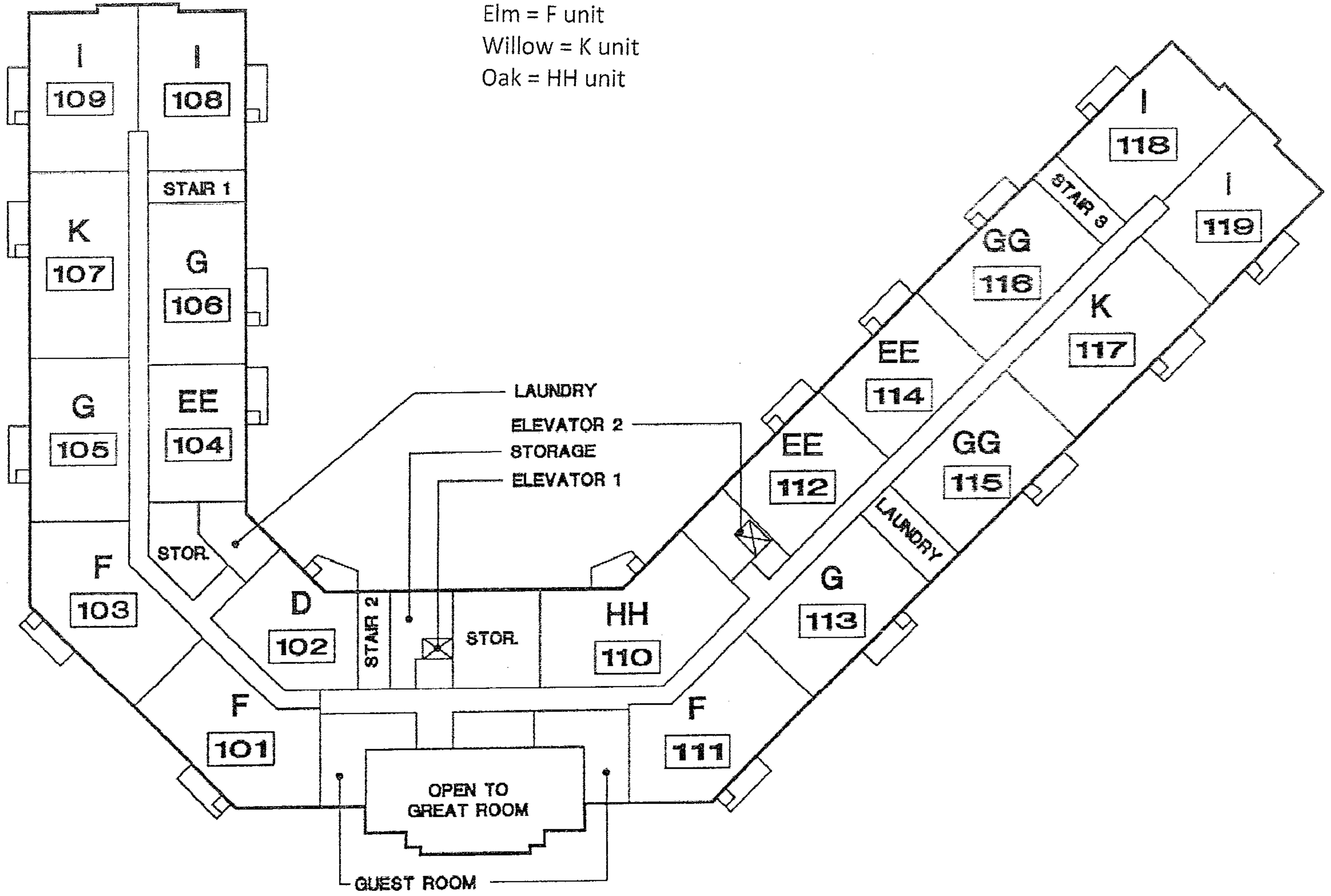
GROUND FLOOR PLAN

1" = 50'-0"



Drawings are approximate & are subject to change

Spruce = D unit
 Birch = EE unit
 Maple = GG unit
 Hickory = G unit
 Hawthorne = I unit
 Ash = C unit
 Elm = F unit
 Willow = K unit
 Oak = HH unit



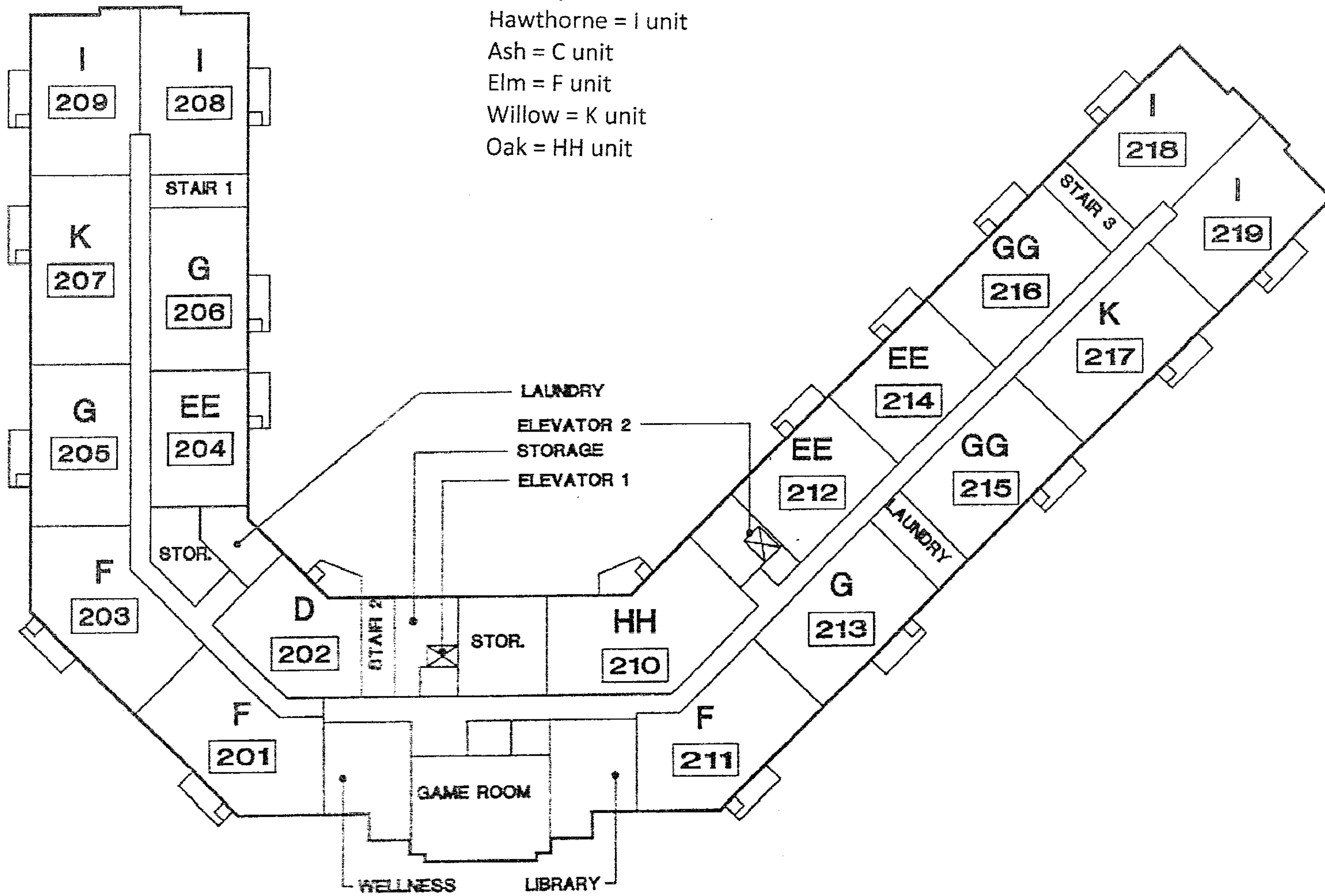
FIRST FLOOR PLAN

1" = 60'-0"



Drawings are approximate & are subject to change

Spruce = D unit
 Birch = EE unit
 Maple = GG unit
 Hickory = G unit
 Hawthorne = I unit
 Ash = C unit
 Elm = F unit
 Willow = K unit
 Oak = HH unit



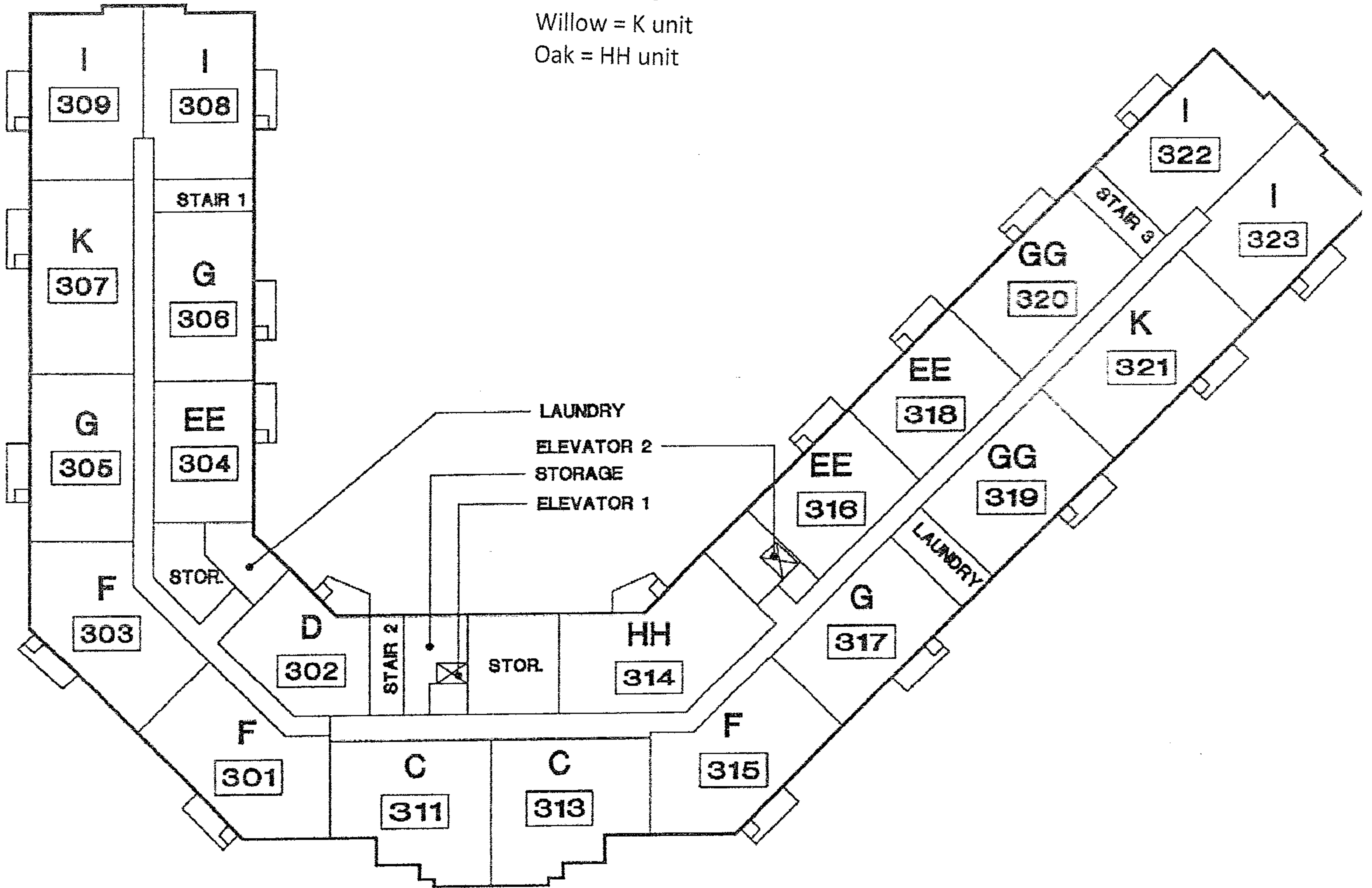
SECOND FLOOR PLAN

1" = 50'-0"



Drawings are approximate & are subject to change

- Spruce = D unit
- Birch = EE unit
- Maple = GG unit
- Hickory = G unit
- Hawthorne = I unit
- Ash = C unit
- Elm = F unit
- Willow = K unit
- Oak = HH unit



THIRD FLOOR PLAN

1" = 50'-0"

Drawings are approximate & are subject to change