

Cooperative Site Plan, Footprints, Floor Plans & Home Features



Realife Cooperative
of Hibbing South

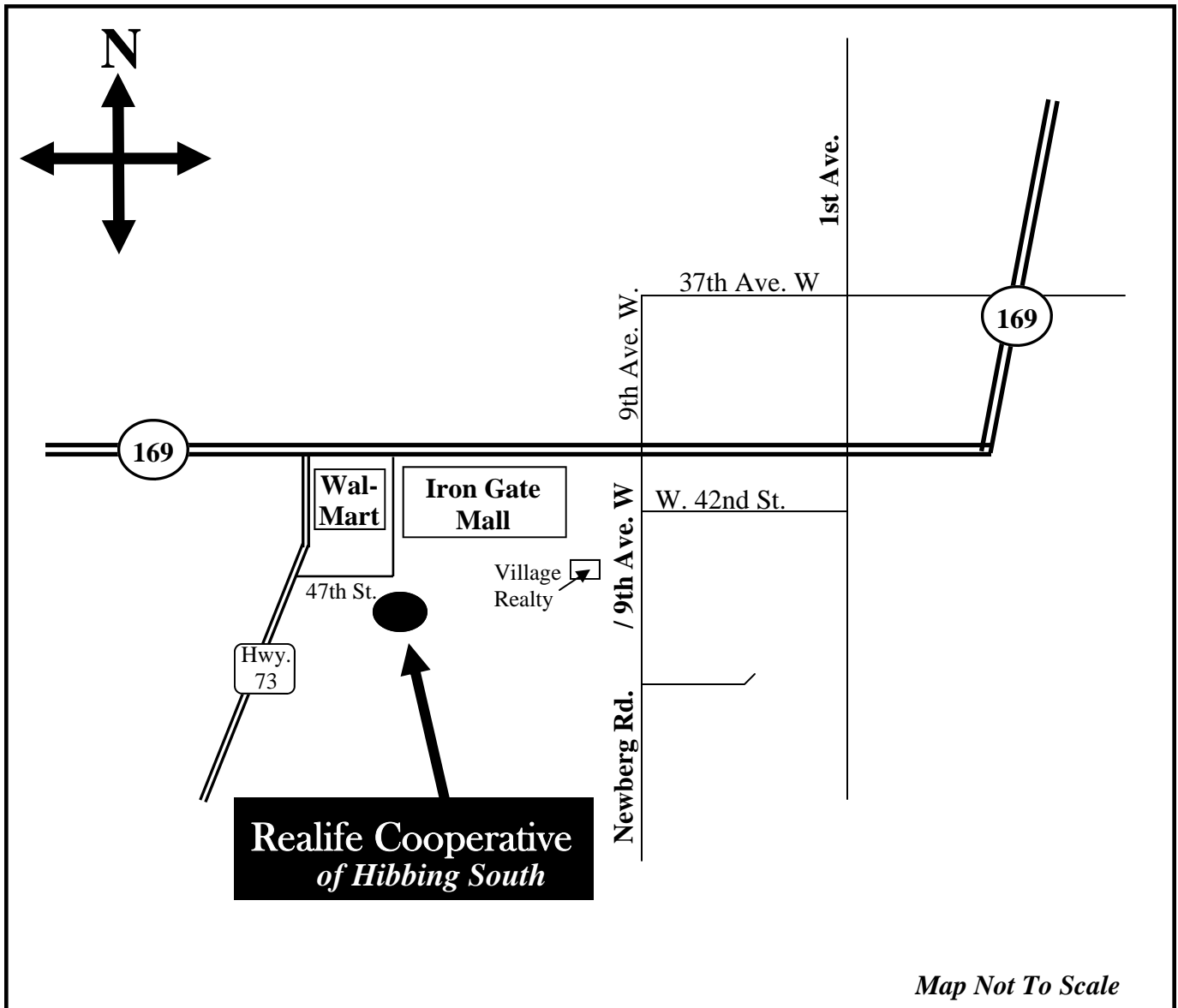
218-262-6427 / 1-800-292-4155



Realife Cooperative of Hibbing South Site Location

Hibbing South Office (218) 262-6427

Main Office (800) 292-4155



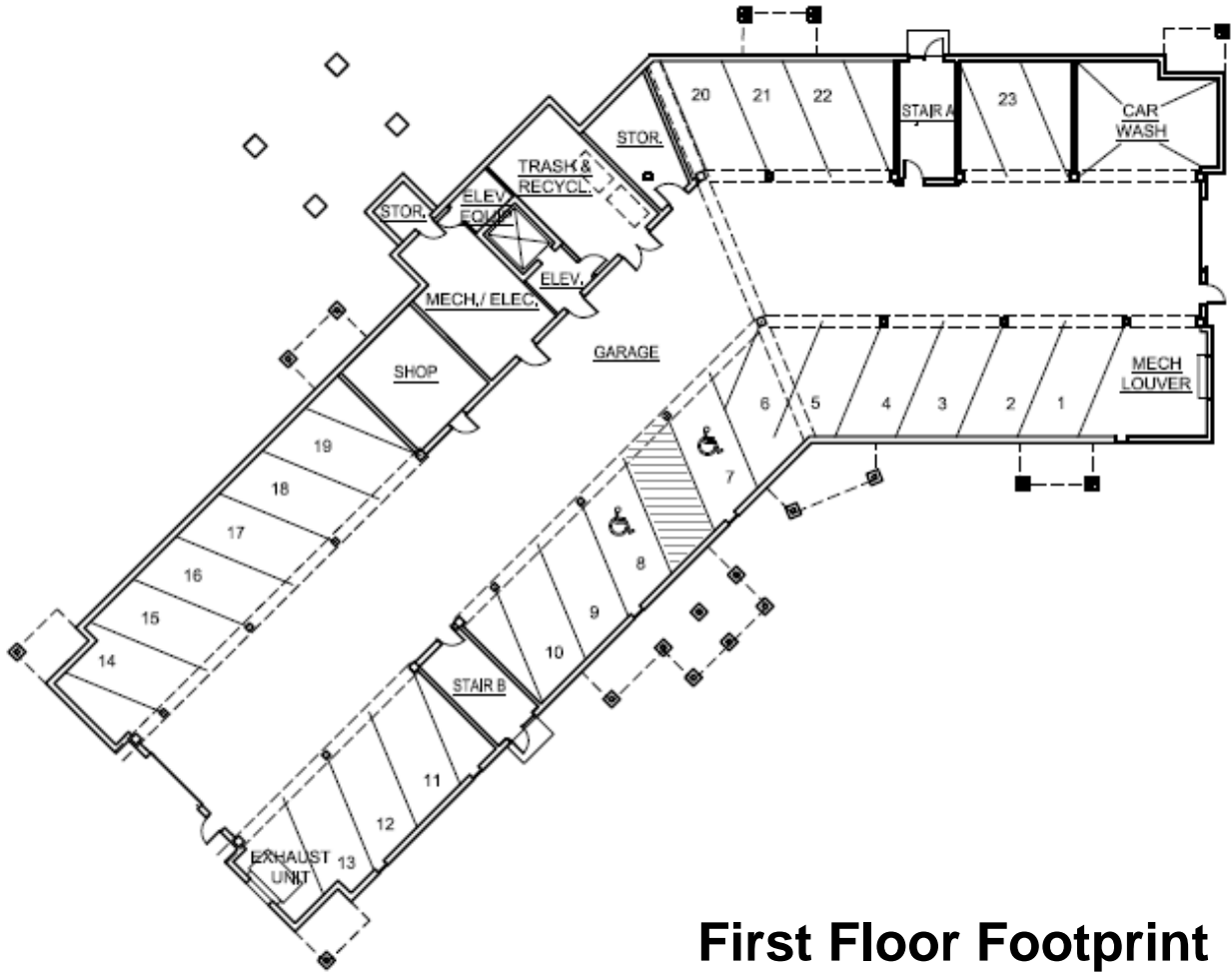
Information Office:

214 E. Howard St.

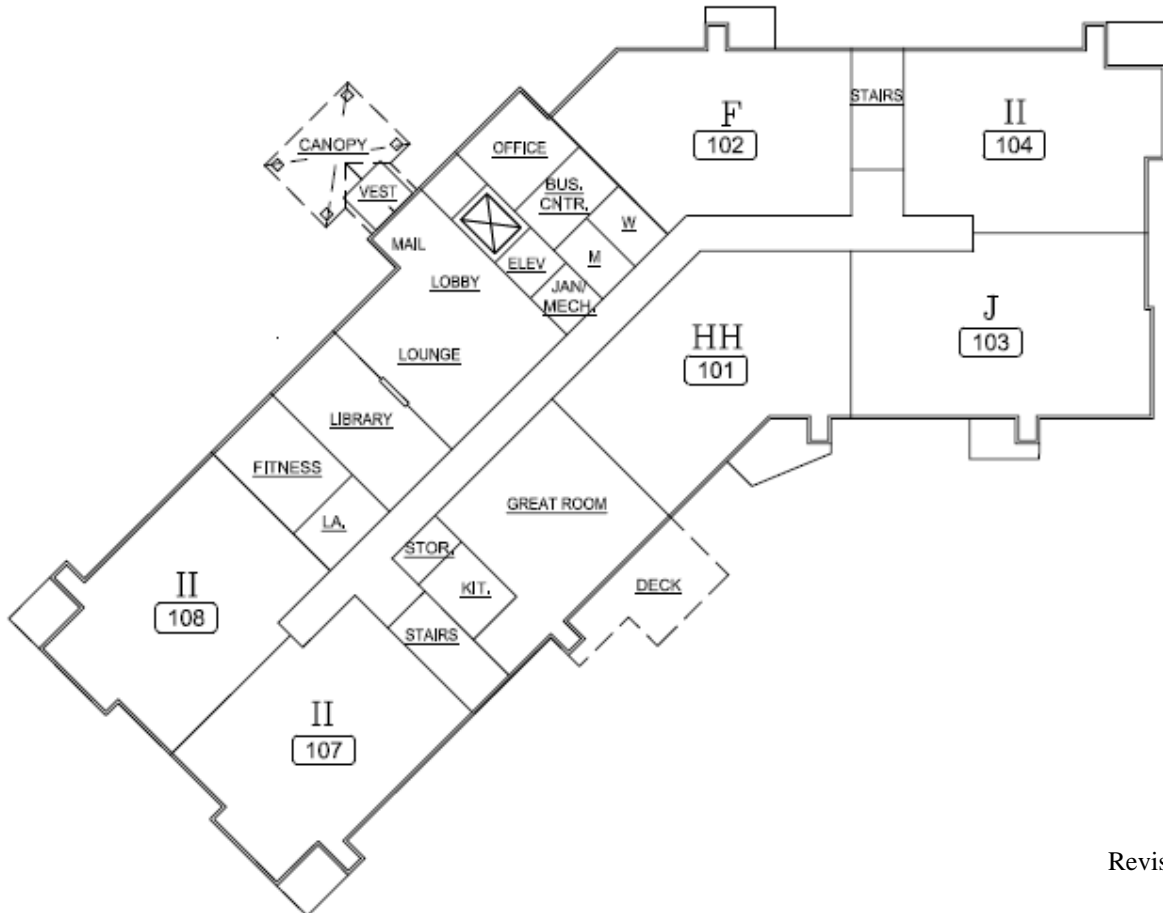
Hibbing, MN 55746

Hours: Monday & Wednesday-Friday: 9am-1pm

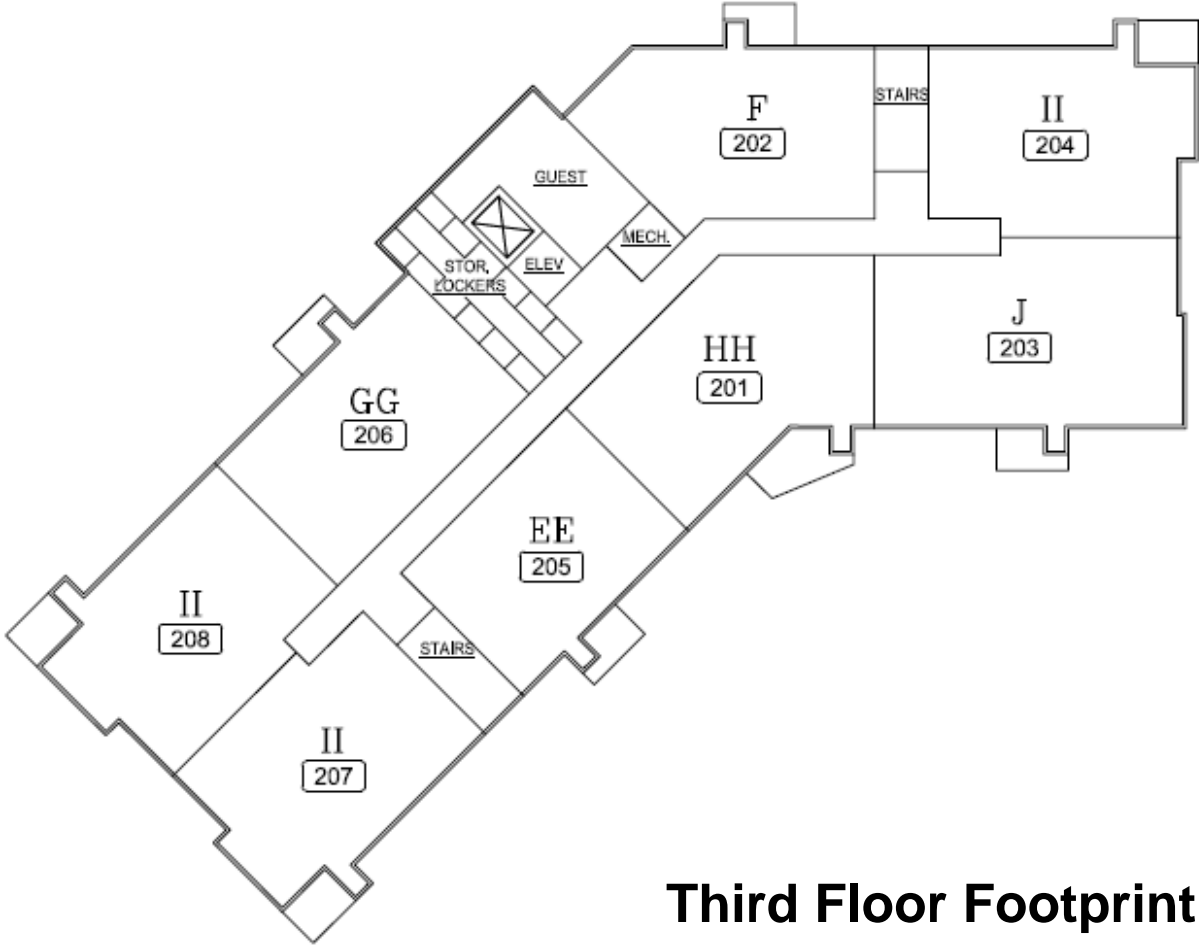
Garage Footprint



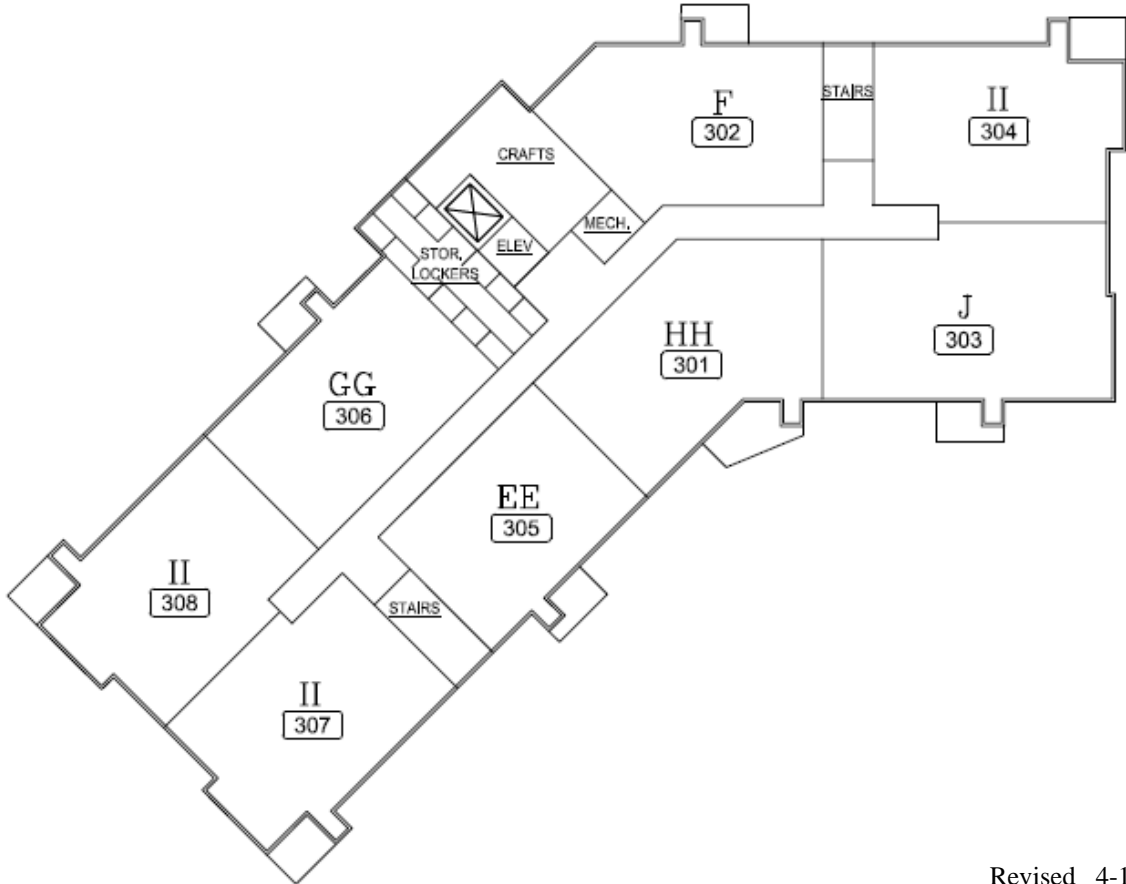
First Floor Footprint



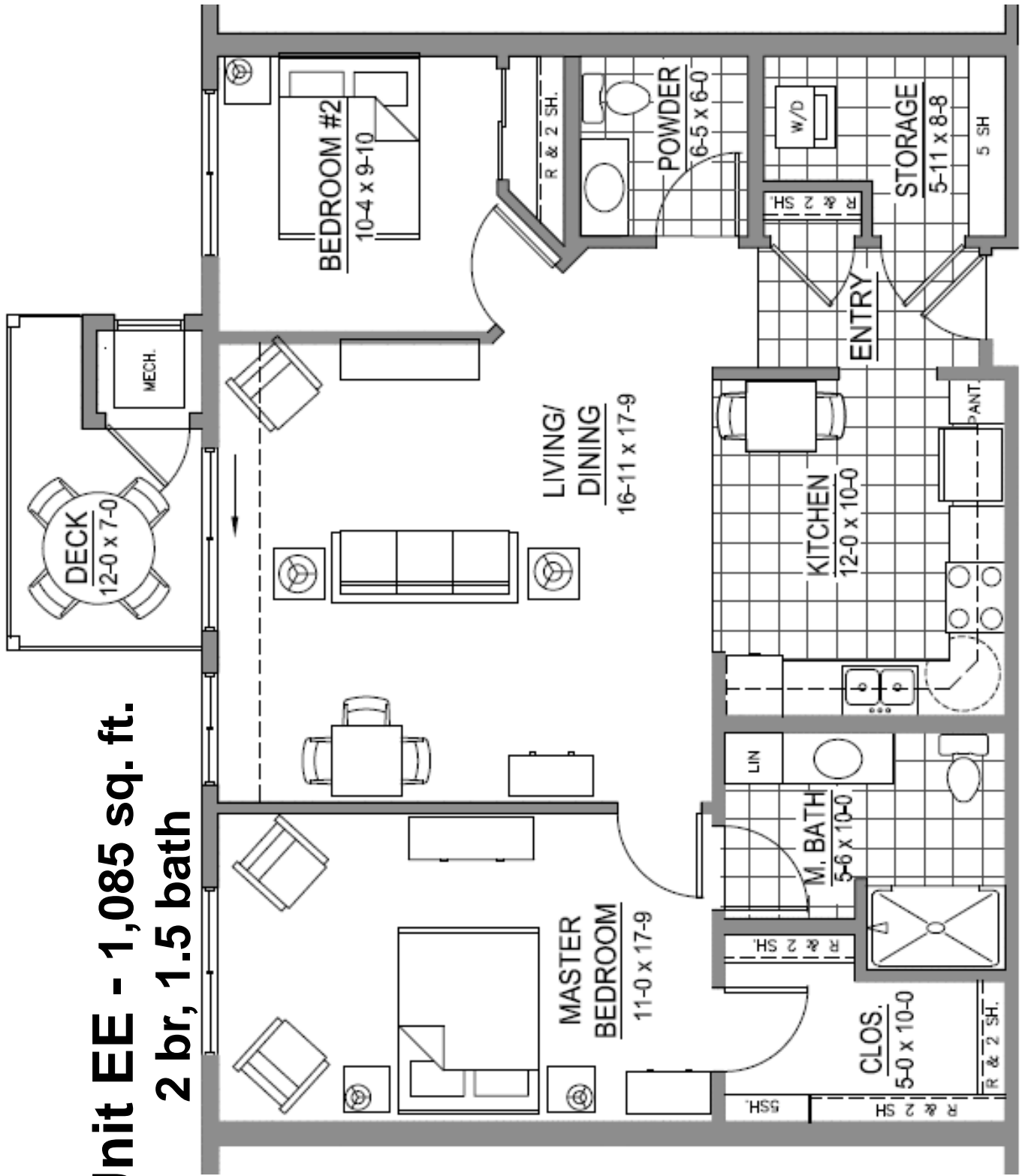
Second Floor Footprint



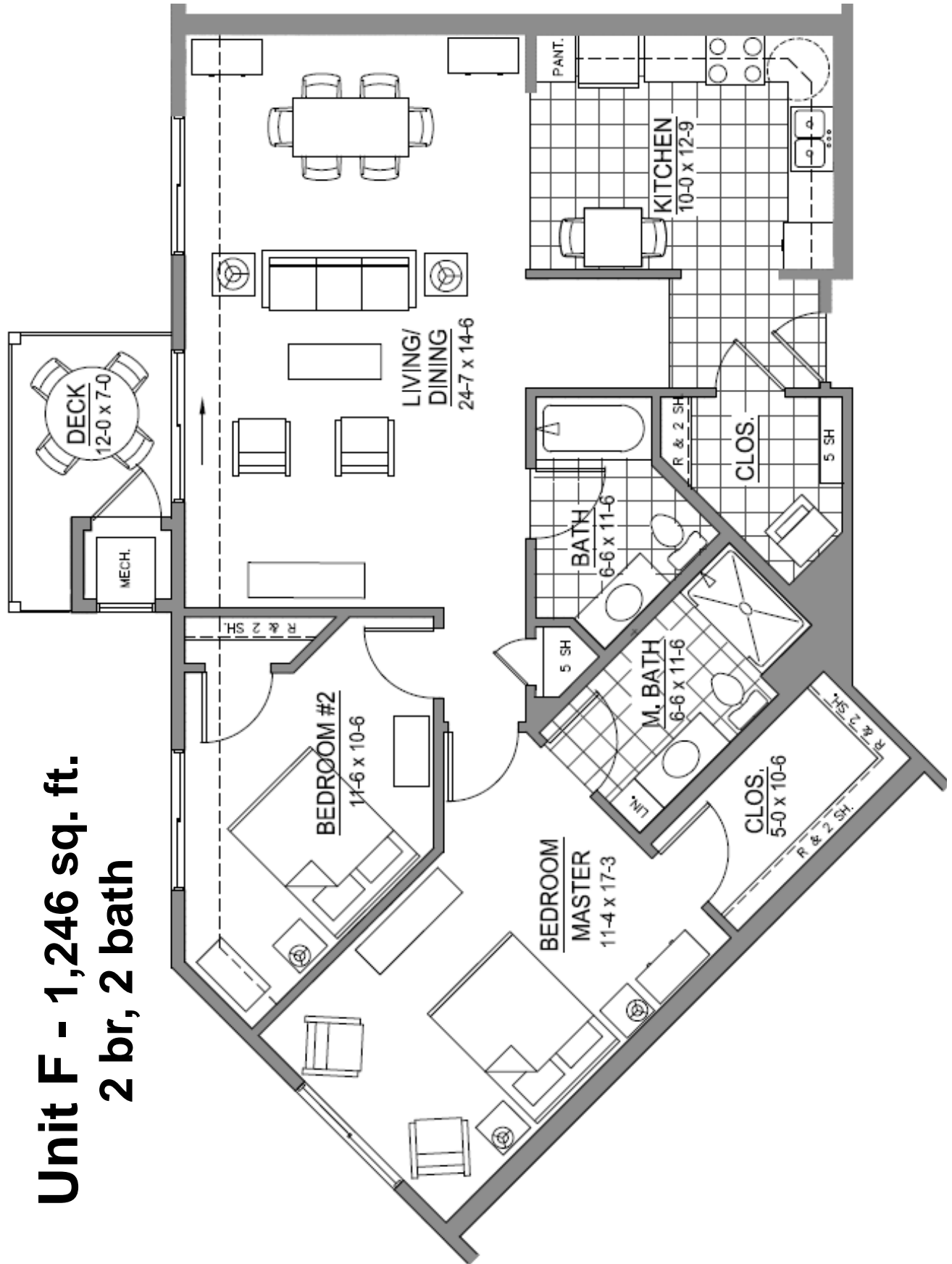
Third Floor Footprint



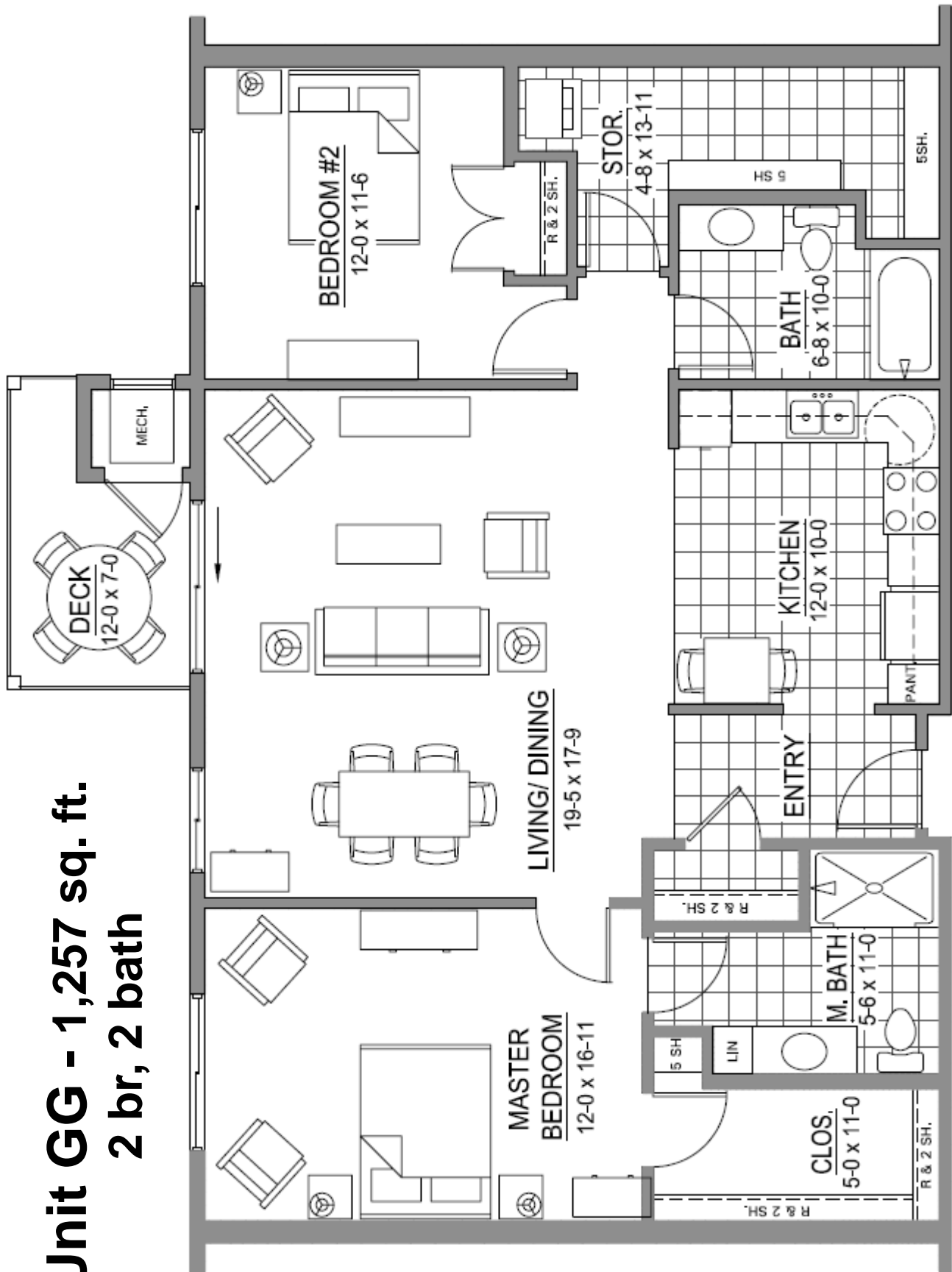
Unit EE - 1,085 sq. ft. 2 br, 1.5 bath



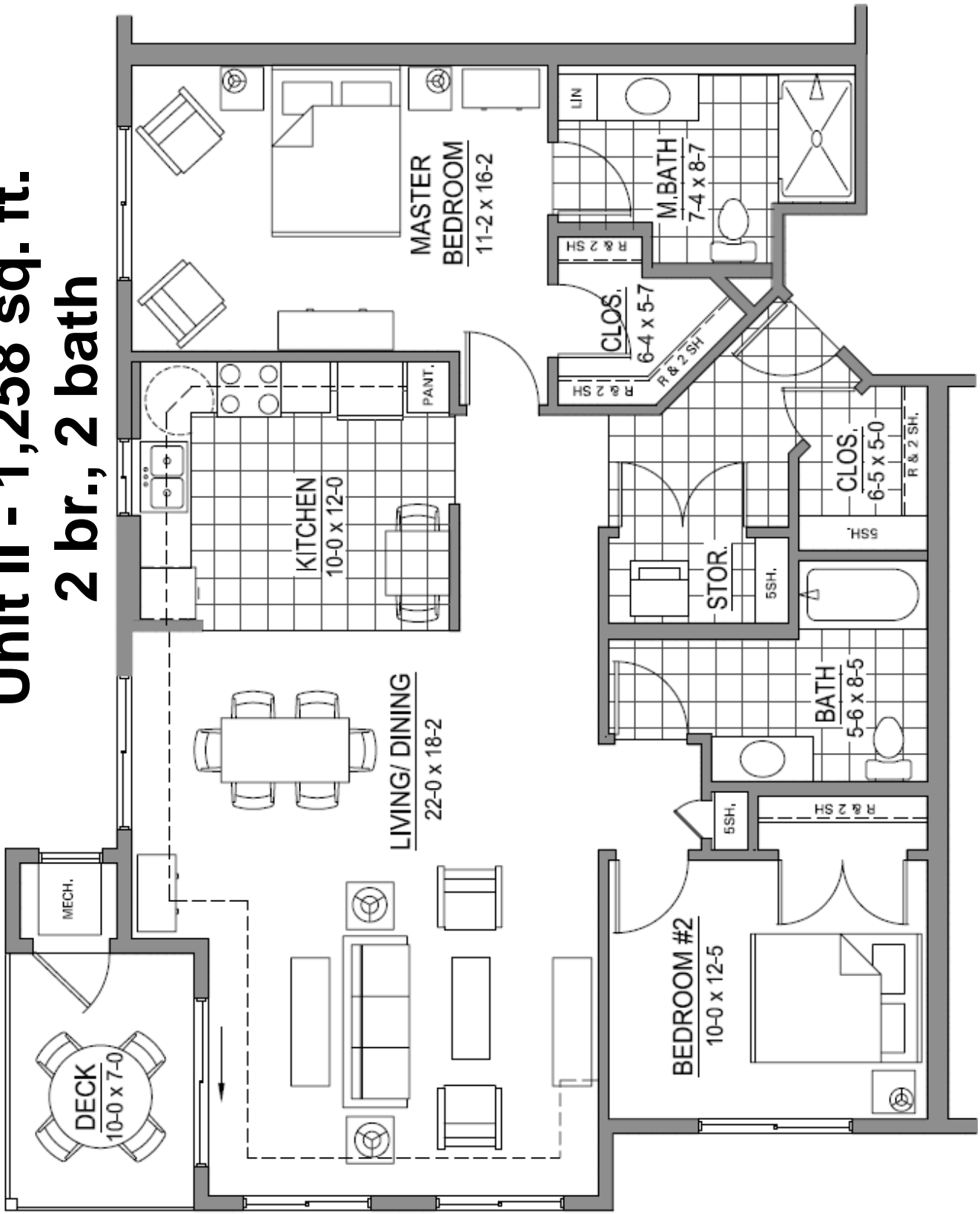
**Unit F - 1,246 sq. ft.
2 br, 2 bath**



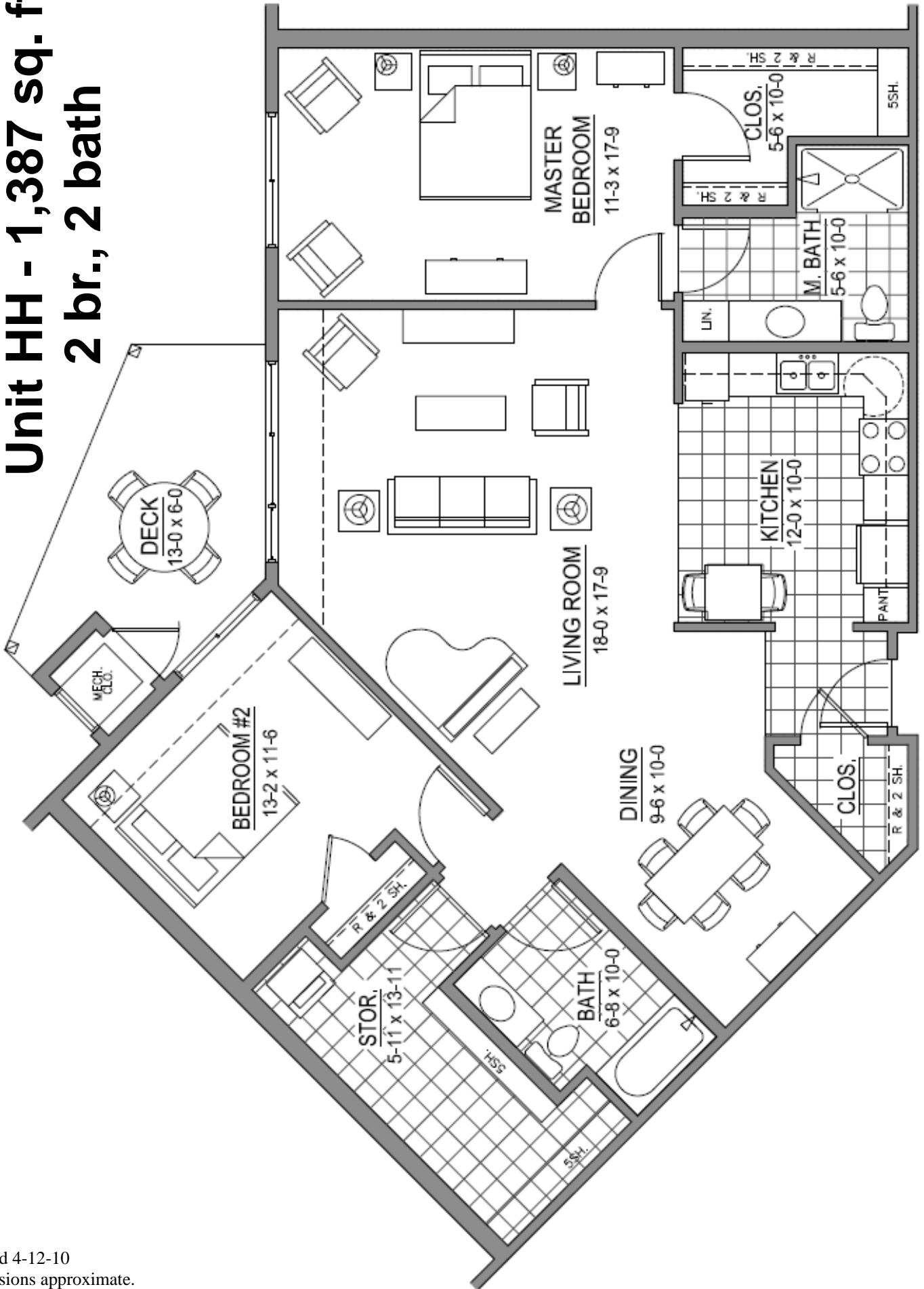
**Unit GG - 1,257 sq. ft.
2 br, 2 bath**



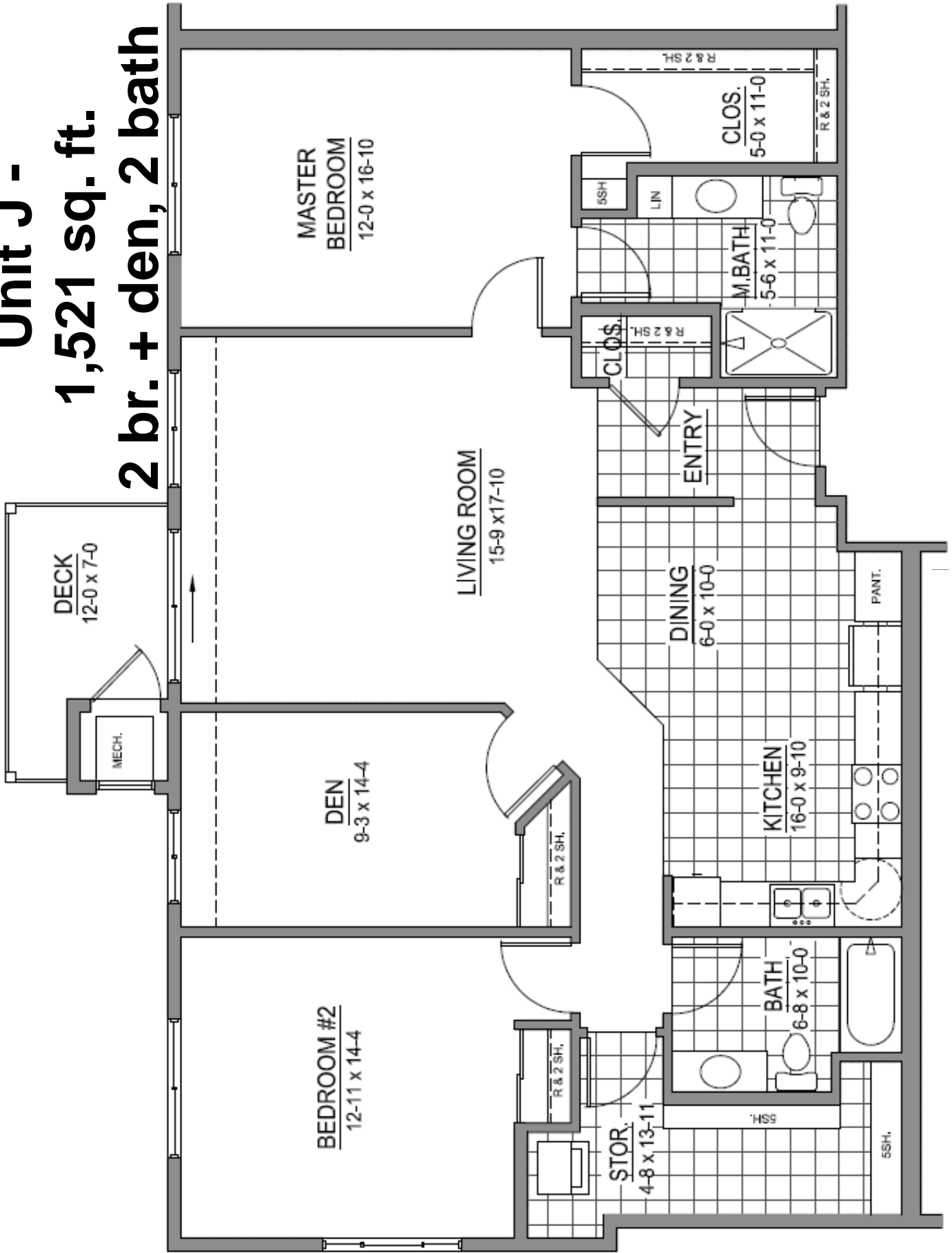
Unit II - 1,258 sq. ft. 2 br., 2 bath



Unit HH - 1,387 sq. ft. 2 br., 2 bath



Unit J - 1,521 sq. ft. 2 br. + den, 2 bath



Revised 6-7-10
Dimensions approximate.

Quality, Age-Specific Design

It's The Small Things That Make a House a Home.

Extra Storage With Washer/Dryer

- ◆ *Large storage space in unit*
- ◆ *Plus, external storage closet*
- ◆ *Washer/dryer in individual home*

NEW!

NEW!

Kitchen

- ◆ Self-cleaning oven with *flat top stove*
- ◆ Frost-free freezer & refrigerator
- ◆ Garbage disposal
- ◆ *Raised dishwasher* with microwave above
- ◆ *Double lazy-susan* in kitchen corner
- ◆ Kitchen *pantry with pull-out shelving*

NEW!

NEW!

Windows

- ◆ *Window coverings on all windows*
- ◆ *Energy efficient windows slide* for easy opening

Flooring

- ◆ Kitchen, entry, bathrooms, entry closet —*your choice of vinyl* floor color and pattern
- ◆ Living room, bedrooms, dining area & bedroom closets—*your choice of color*

Heating and Cooling

- ◆ *Individually-controlled* heating & cooling year-round in each unit
- ◆ *Forced air heating & central cooling*



Closets

- ◆ *Convenient* front entry closet
- ◆ *Spacious walk-in* master bedroom closet
- ◆ *Extra storage closet* in home with washer/dryer
- ◆ Coated wire shelving & hanging units in closet

Bathrooms

- ◆ *Large master bathroom* with five-ft. wide fiberglass *step-in shower* stall
- ◆ *Re-enforced* towel bars to use as grab bars
- ◆ *18" comfort height toilet in master bath*

Electrical

- ◆ Electrical outlet & light on *private balcony*
- ◆ Telephone jacks & cable jacks in kitchen, bedrooms and living room

Construction

- ◆ *Excellent sound reduction with double wall construction* between units
- ◆ *Barrier-free* access throughout: *36" doorways in home*
- ◆ *Fire protection*, entire building & homes feature sprinklers, smoke alarms and CO detectors
- ◆ *Lever door handle* locksets on door
- ◆ Fully secured building

NEW!

Customize Your Home: Those members who sign up by the early stages of construction will be able to personalize their home by choosing flooring, countertops, cabinet color & more.

